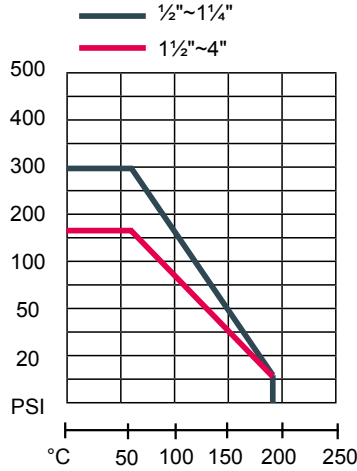


STANDARD:

- Investment Casting Body & Cap
- Blow-Out Proof Stem
- Full Port 3-PC Design ANSI 150#
- Pressure Blank Hole in Ball Solt(as request)
- Locking Device Handle Available
- Design Standard:ASME B16.34
- Wall Thickness:ASME B16.34,GB 12224
- Flange Standard:ASME B16.5
- Fire-Safe Design Available
- Several Handle Material Available
- Inspection Standard:API598

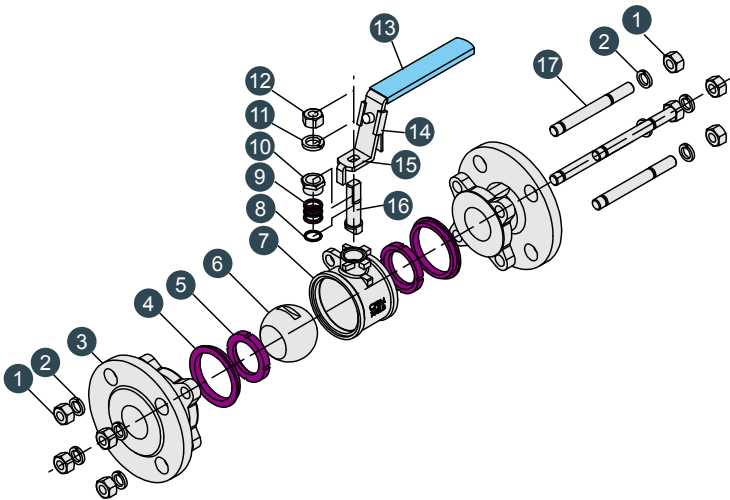
Pressure Temperature Compare



MB3050



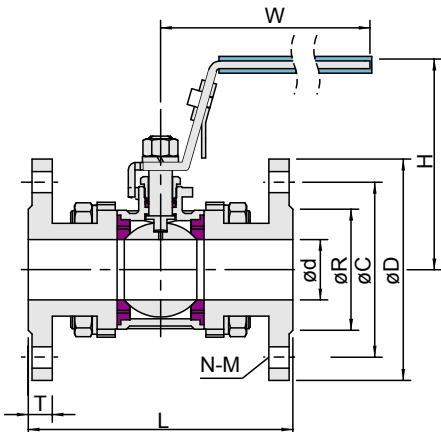
Technical Data			
Test Pressure	Shell Test	9.0	MPA
	Tightness Test	7.50	
	Gas-Tightness Test	0.8	
Max Working temperature		-20°C~+160°C	
Applicable Medium:Water,Oil,Gas,Acid			



No.	PARTS	MATERIAL		
1	Nut	A194-B8		
2	Bolt	A193-7		
3	Cap	CF8M	CF8	WCB
4	Gasket	PTFE	R-PTFE	
5	Ball Seat	PTFE	R-PTFE	
6	Ball	SS316	SS304	
7	Body	CF8M	CF8	WCB
8	Thrust Washer	PTFE	R-PTFE	
9	V-Ring Packing	PTFE	R-PTFE	
10	Stop Nut	SS304	SS201	
11	Spring Washer	SS304	SS201	
12	Stem Nut	A194-8		
13	Handle Cover	Plastic		
14	Locking Device	SS304	SS201	
15	Handle	SS304	SS201	
16	Stem	SS316	SS304	
17	Bolt	A193-B8		

PPL & PEEK High temperature ball seat available

Unit:mm



SIZE	d	L	H	W	R	C	D	N	M	T	TORQUE N.M
1/2"	15	108	78	125	35	60.5	89	4	16	11.2	8
3/4"	20	117	90	125	43	70	98	4	16	11.2	10
1"	25	127	93	175	51	80	108	4	16	12.0	13
1 1/4"	32	140	99	175	64	89	117	4	16	12.7	20
1 1/2"	38	165	110	210	73	99	127	4	16	14.3	28
2"	48	178	118	210	92	120.5	152	4	19	15.9	35
2 1/2"	65	190	150	310	105	140	178	4	19	17.5	50
3"	78	203	158	310	127	153	191	4	19	19.1	86
4"	100	229	165	350	157	191	230	8	19	23.9	116