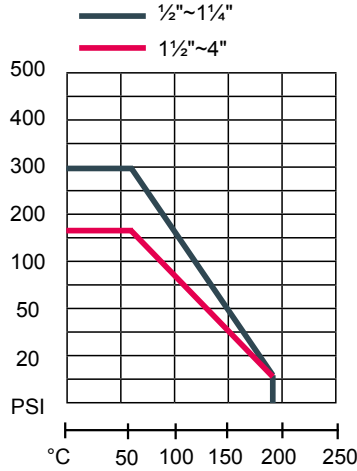


**STANDARD:**

- Investment Casting Body & Cap
- Blow-Out Proof Stem
- Full Port 3-PC Design DIN PN10-40
- Pressure Blank Hole in Ball Solt(as request)
- Locking Device Handle Available
- Design Standard:ASME B16.34
- Wall Thickness:ASME B16.34,GB 12224
- Flange Standard:DIN2633/DIN2543
- Fire-Safe Design Available
- Several Handle Material Available
- Inspection Standard:API598

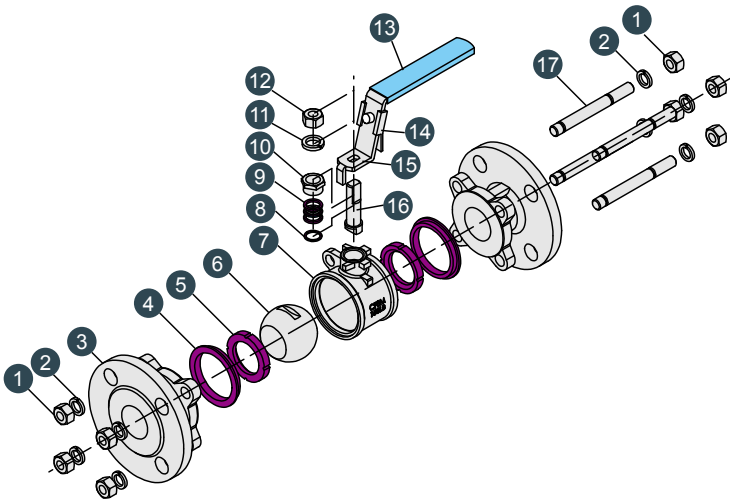
Pressure Temperature Compare



**MB3051**



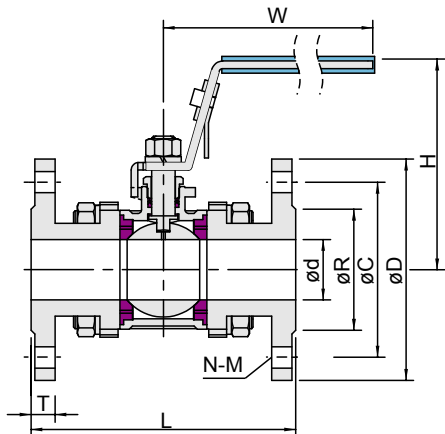
Technical Data			
Test Pressure	Shell Test	10.0	MPA
	Tightness Test	7.50	
	Gas-Tightness Test	0.8	
Max Working Temperature		-20°C~+160°C	
Applicable Medium:Water,Oil,Gas,Acid			



No.	PARTS	MATERIAL		
1	Nut	A194-B8		
2	Bolt	A193-7		
3	Cap	CF8M	CF8	WCB
4	Gasket	PTFE	R-PTFE	
5	Ball Seat	PTFE	R-PTFE	
6	Ball	SS316	SS304	
7	Body	CF8M	CF8	WCB
8	Thrust Washer	PTFE	R-PTFE	
9	V-Ring Packing	PTFE	R-PTFE	
10	Stop Nut	SS304	SS201	
11	Spring Washer	SS304	SS201	
12	Stem Nut	A194-8		
13	Handle Cover	Plastic		
14	Locking Device	SS304	SS201	
15	Handle	SS304	SS201	
16	Stem	SS316	SS304	
17	Bolt	A193-B8		

PPL & PEEK High temperature ball seat available

Unit:mm



SIZE	d	L	H	W	R	C	D	N	M	T	TORQUE N.M
1/2"	15	115	78	125	45	65	95	4	14	14	8
3/4"	20	120	90	125	58	75	105	4	14	16	10
1"	25	125	93	175	68	85	115	4	14	16	13
1 1/4"	32	130	99	175	78	100	140	4	18	16	20
1 1/2"	38	140	110	210	88	110	150	4	18	18	28
2"	48	150	118	210	102	125	165	4	18	18	35
2 1/2"	65	170	150	310	122	145	185	4	18	20	50
3"	78	180	158	310	138	160	200	8	18	20	86
4"	100	190	165	350	158	180	220	8	18	22	116