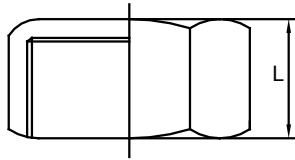
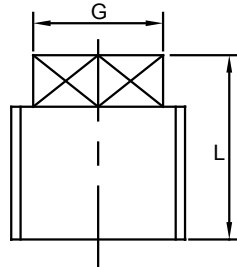


Hexagon Cap



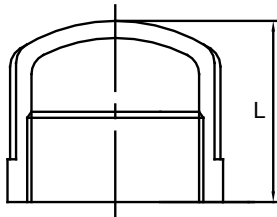
Size	L	Size	L
1/8"	17.4	1 1/4"	28.5
1/4"	17.4	1 1/2"	30.0
3/8"	17.8	2"	36.5
1/2"	19.8	2 1/2"	48.0
3/4"	21.5	3"	52.0
1"	25.3	4"	55.0

Square Plug



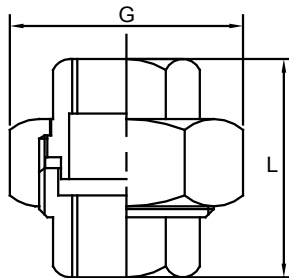
Size	L	G	Size	L	G
1/8"	15.5	7.0	1 1/4"	34.0	23.0
1/4"	16.0	9.0	1 1/2"	34.0	28.0
3/8"	20.0	12.0	2"	43.0	34.0
1/2"	21.0	14.5	2 1/2"	46.5	38.0
3/4"	25.0	17.5	3"	54.0	38.0
1"	30.0	18.5	4"	58.0	58.0

Round Cap



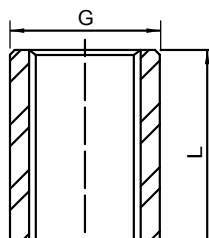
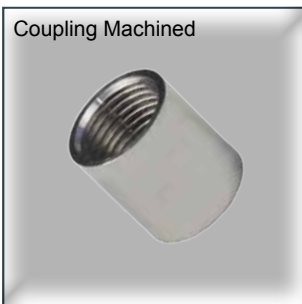
Size	L	Size	L
1/8"	14.6	1 1/4"	28.5
1/4"	15.4	1 1/2"	30.3
3/8"	17.8	2"	36.4
1/2"	20.8	2 1/2"	42.2
3/4"	23.5	3"	43.0
1"	25.5	4"	54.5

Union



Size	L	G	Size	L	G
1/8"	25.0	27.0	1 1/4"	52.0	69.0
1/4"	30.5	33.0	1 1/2"	55.5	75.0
3/8"	33.5	36.5	2"	63.5	92.5
1/2"	37.0	40.0	2 1/2"	76.5	113.5
3/4"	38.5	49.5	3"	81.0	126.0
1"	47.0	56.0	4"	95.0	154.0

Coupling Machined



Size	L	G	Size	L	G
1/8"	19.5	14.0	1 1/4"	47.5	48.0
1/4"	23.5	17.0	1 1/2"	52.5	54.0
3/8"	27.0	20.0	2"	52.5	67.0
1/2"	33.5	25.5	2 1/2"	66.0	81.0
3/4"	35.5	32.0	3"	70.0	94.5
1"	43.0	39.0	4"	82.0	121.5